

KEY FEATURES

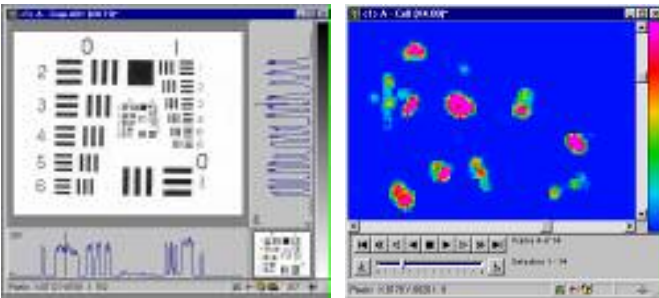
- The IFS32 image processing and data acquisition software is a 32 bit Window 95/98/NT application.
- Up to 26 image buffers (designations labelled A to Z).
- Images may be either 8 bit, 16 bit, 32 bit, floating point or colour format.
- Each designated image buffer may be either a single image or a sequence of images.
- The number of images in a sequence is limited by hard disk and memory capacity.
- A simple and consistent "point and click" style user interface.
- A range of powerful image processing and data extraction and graphing routines.
- Image processing functions may operate between images or between images and constants.
- A simple "learn and recite" macro system allows sequences of operations to be memorised and replayed.
- User definable toolboxes provide quick access to complex functions.
- Hardware drivers for HRPCS photon counting, IPD photon counting and video frame grabbers.
- "Developers Code" modules may be developed using Microsoft C++ and seamlessly integrated into the main

Image Windows

Image windows may display either a single image or a sequence of images. Sequence windows may be recognised by the VCR style play control buttons underneath the image.

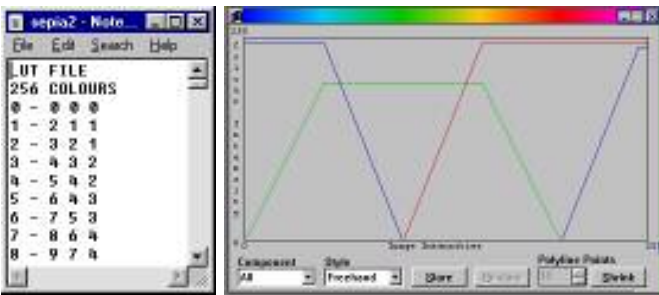
There are four window display modes.

- o Image only
- o Image and colour palette
- o Image and x,y intensity profile
- o Image, colour palette and x,y intensity profiles



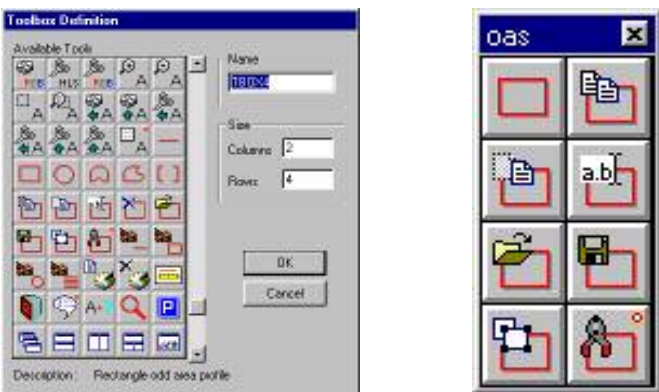
Colour Palettes

Image intensity is normally displayed using a grey scale. Alternatively, colour may be used to represent intensity or ranges of intensities. A number of predefined colour palettes are provided. Colour palettes may be modified by the use of text or graphical editors



Toolboxes

Nearly all functions accessible via menu commands are available through icons which may be built into user defined toolboxes. This facility provides a short cut to commonly used functions.



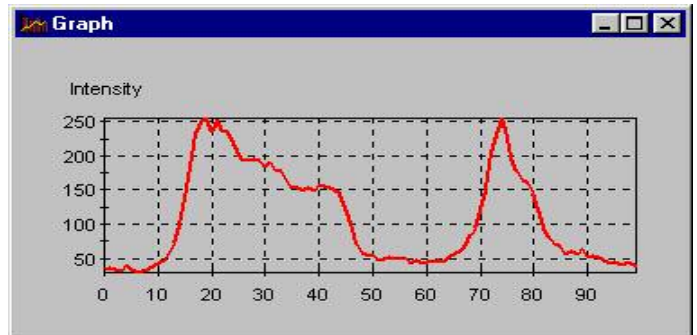
Hardware Requirements

Minimum – Pentium 120, 16Mb Ram, 600x800 true colour display, 14" monitor, CD ROM, 5Mb spare disk capacity plus storage space for images.

Recommended – Pentium II 300MHz, 64Mb Ram, 1280x1024 true colour display, 17" monitor, 4Gb hard disk, CD ROM (or CD Writer)

Graph Utilities

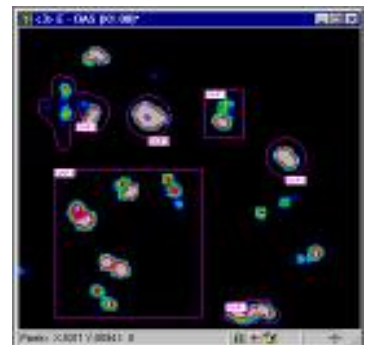
- o Lines may be drawn at any angle over an image and the intensity profile of the data along the line is plotted as a graph.
- o Columns or rows in a rectangular area may be displayed as an average line profile.
- o Circular line profile allows the intensity profile of the circumference of a circle to be plotted as a line graph.
- o The area profile command shows intensity variations in a defined area as a histogram



Odd Area Sets

Multiple odd areas consisting of circles, rectangles, polygons or freehand areas may be drawn over an image.

Statistics from a single image or a sequence of images may then be extracted and displayed in the OAS statistics results



Frame	OAP 0	OAP 01	OAP 02	OAP 03	OAP 04
1	0	0	0	0	0
2	17	110	1	634	314
3	1304	3872	902	3508	2577
4	4743	7839	3198	1884	4481
5	6158	6710	4578	1665	3585
6	8507	5427	3858	1261	3301
7	6801	3233	3468	1040	3498
8	7356	1507	2657	158	1886
9	7130	421	1022	54	834
10	7320	178	786	9	942
11	5154	308	629	0	277
12	3360	3	84	1	72
13	2611	9	63	9	18
14	1958	0	9	0	51

Available Functions

- Constant Operations: *Add, Subtract, Multiply, Divide, AND, OR, XOR, NOT, Clip High and Clip Low*
- Image Operations: *Add, Subtract, Multiply, Divide, AND, OR, XOR, Negate and Average*
- Image Enhancement: *Smooth, Sharpen, Threshold, Contrast Stretch, Erode, Dilate*
- Image Orientation: *Mirror LR, Mirror TB, Rotate 90, Rotate 180, Rotate 270, Rotate*
- Copy: *To 8 Bit, 16 bit, 32 bit or to Floating Point*
- Sizing: *Enlarge, Reduce, Crop Area*
- Measure: *Pixel, Line Profile, Area Profile, Circumference, Calibration*
- Presentation: *Join, Split, Matrix*
- Colour Palettes: *Various colour and grey scale palettes*
- Odd Area Set Analysis: *Rectangle, Circle, Trapezoid, Freehand*
- Statistical Reports: *Max, Mean Total, Standard Deviation*
- Macro Language: *Record and replay sequences of operations.*
- Annotation: *Annotate Images with text and arrows.*
- Printing: *Printer support is via MS Windows.*
- File Format: *PCX, BMP, TXT, BIN, PCT, SEQ*

Photek Ltd

26 Castleham Road,
St Leonards on Sea,
East Sussex, TN38 9NS
United Kingdom

T: (+44) 1424 850555
F: (+44) 1424 850051
E: sales@photek.co.uk
W: www.photek.co.uk

Thursday,

Photek Ltd reserves the right to update and improve this specification without prior notice

© 2001 Photek Ltd

Photek is a registered trademark of Photek Limited in the UK and for other countries